

[www.locala.com](http://www.locala.com)

Locala is an online platform of business intelligence information and data, built for RMI & Construction companies working in the Social Housing sector. We started as Housingnet in 1997 building a database of Social Housing organisations and moved in to contract data in 2018.

We provide a data service to companies, with products and services to sell to Housing Associations & Local Authorities, and to the organisations we collect data on.

These are some of our clients.



[helpdesk@locala.com](mailto:helpdesk@locala.com)

Contract Search – because we specialise, we can offer a more targeted service to our clients, this sets us apart from other tender portals who don't.

Tenders / Daily Bulletin (178)

Export

Build-a-Table

Bulletin Settings

Contract Type

Sector

Location

Trades & Services

Add Keyword

Selected Options

Contract Type

Frameworks

Sector

Housing

Location

England

Greater London

South East

UK	TYPE	CONTRACT TITLE	CLIENT	ALL TRADES	PRIMARY TRADE	TOTAL VALUE	PUBLISHED	DEADLINE
UK2	PIN	Legal Panel for Public Sector	Crown Commercial Service	Legal	Legal	£500,000,000	09-05-2025	241 Days
UK1	PIN	Fire Safety Consultancy Framework	Peabody Trust	Fire Risk Assessment	Fire Risk Assessment	£5,625,000	08-05-2025	-
UK1	PIN	Creative Agencies & Interior Design Framework	Peabody Trust	All Other Contracts	All Other Contracts	£4,583,333	08-05-2025	-
UK1	PIN	Planned Work Framework - External and Internal Repairs	Brighton & Hove City Coun...	Painting and Decoration, Ge...	Painting and Decoration	-	08-05-2025	-
UK1	PIN	Legal Services Framework	Platform Housing Limited	Legal	Legal	£2,250,000	08-05-2025	-
UK1	PIN	Recruitment Services	Oxford City Council	Recruitment	Recruitment	£10,000,000	08-05-2025	-
UK2	PIN	Sustainable Furniture Solutions Framework (PA23) (Preliminary Market Enga...	NEUPC Ltd	Other Supplies	Other Supplies	£180,000,000	07-05-2025	36 Days
UK4	CN	Development Consultancy Framework for the Provision of Employers Agent, C...	The Guinness Partnership	Architect & Surveyor, Proje...	Architect & Surveyor	£33,300,000	07-05-2025	32 Days
UK2	PIN	Payment Solutions 3 - RM6383	Crown Commercial Service	Electronic Payments	Electronic Payments	£15,000,000,000	07-05-2025	14 Days
UK1	PIN	Legal Services Framework 2026 - 2030	Homes England	Legal	Legal	£50,000,000	06-05-2025	-
UK1	PIN	Property & Financial Professional Services Framework	Homes England (HCA)	Architect & Surveyor, Housi...	Architect & Surveyor	£120,000,000	06-05-2025	-
UK1	PIN	Development and Regeneration Technical Services (DARTS) Framework	Homes England	Architect & Surveyor	Architect & Surveyor	£200,000,000	06-05-2025	-
UK12	CN	Development Consultancy Framework for the Provision of Employers Agent, ...	The Guinness Partnership	Architect & Surveyor, Proje...	Architect & Surveyor	-	06-05-2025	Expired
UK4	CN	Development Consultancy Framework for the Provision of Employers Agent,...	The Guinness Partnership	Architect & Surveyor, Proje...	Architect & Surveyor	£2,599,370,001	06-05-2025	Expired
UK1	PIN	Sustainable Furniture Solutions Framework (PA23)	NEUPC Ltd	Other Supplies	Other Supplies	£180,000,000	06-05-2025	-
UK2	PIN	Recruitment Services (Market Engagement Webinars on 20.05.2025 & 22.05.20...	Oxford City Council	Recruitment	Recruitment	£10,000,000	02-05-2025	13 Days
UK2	PIN	Aggregates, Concrete & Stone Supply - NEPO222 (Closing Date Extended) [UK...	North East Procurement Or...	Building Materials, Other S...	Building Materials	£225,000,000	01-05-2025	Expired
UK2	PIN	Insulation and Associated Works Framework - EEM0046 [UK2: Preliminary Mar...	Efficiency East Midlands ...	External Wall Insulation. G...	External Wall Insulation	-	01-05-2025	52 Days

Page 1 of 4 (178 results)

1

2

3

4

50

75

100

All tenders and awards are assessed for suitability, re-categorised by 'Trade', and entered, by a human, onto the Locarla platform.

<b>R&amp;M</b>	<b>Materials</b>	<b>Construction</b>
Adaptations	Building Materials	Asbestos Removal
DHS	Central Heating	Asbestos Survey
DLO Support	Chair Lifts & Hoists	Civil
Doors & Windows	Doors & Windows	Commercial Construction
Glazing	Kitchens & Bathrooms	Demolition
Kitchens & Bathrooms	Managed Stores	Fencing
Out of Hours Repairs	Other Supplies	Flooring
Painting and Decoration	Plumbing & Gas	General building works
R&M Works (Various)	Responsive Repairs	Groundworks
Responsive Repairs		Landscaping
Retrofit	<b>Professional services</b>	Modular
Voids	Architect & Surveyor	Other Construction
	Call Handling	Refurbishment
<b>M&amp;E</b>	EPC / Energy Management	Residential Conversions
Electrical	Fire Risk Assessment	Residential New-Build
Energy Management	Housing Consultant	Scaffolding
Fire Safety	Housing Management	
Lifts & Servicing	Insurance	<b>Building Envelope</b>
Lighting	IT/Software	Cladding
Mechanical	Legal	External Wall Insulation
Security	Project Management	Roofing
Solar PV	Recruitment	
Ventilation / Air Con.	Social Care	<b>Other Varied Trades</b>
<b>Plumbing &amp; Gas</b>	<b>FM</b>	Electric Charging Points
Central Heating	Grounds Maintenance	Electronic Payments
Commercial Heating	Hard FM	All Other Contracts
Drainage	Mould/Damp	
Gas Safety Audits	Pest Control	
Gas Servicing	Security Personnel	
Heat Networks	Skips & Waste Management	
Heat Pumps	Soft FM	
Plumbing	Tree Services	
	Water/Legionella	
	Window Cleaning	

# Locarla Bulletin

Daily Tenders, CANs, Minutes & News

September 14th 2022

#1553

[LOCARLA R&M and Construction League Tables are out now. \(Login req.\)](#)

Tender Alerts

Contracts Awarded

LA Minutes

Locarla News

Areas Selected:

[No areas selected.](#)

Selected Keywords:

[No keywords selected.](#)

## Tender Alerts

DN

## Repairs & Maintenance

[Adaptations, DHS, DLO Support, Doors & Windows, Glazing, Kitchens & Bathrooms, Out of Hours Repairs, Painting and Decoration, R&M Works \(Various\) , Responsive Repairs, Retrofit, Voids](#)

**Pan-Dorset Integrated Equip for Living Service 2023 (Closing Date Extended)**

*Bournemouth, Christchurch and Poole Council (BCP)*

**Location:** Dorset  
**Value:** £60,000,000  
**Deadline:** 13 Days

**Additional Information - Investment Works Framework 2023 - 2029 (Closing Date Extended)**

*Hebridean Housing Partnership*

**Location:** Lewis, Harris, Uists and Barra  
**Value:** £14,000,000  
**Deadline:** 16 Days

Notice details and Contract Analysis showing current, present, and past contracts relating to the selected 'Trade' ie. Roofing.

Build-a-Table

UK

Select Options

Contract Type

Sector

Location

Trades & Services

Expiring in ...

£ Value (Less Than)

Selected Options

Contract Type

Contract Awards

Sector

Housing

Location

England

Greater London

South East

Trades & Services

Roofing

26/07/2024 - - Contract award

Provide Essential Repair and Maintenance Services to Properties

2024/HNU 2607-161804

Contracting authority

1) Name, addresses and contact point(s)

Harrow London Borough

Object

1) Title

Provide Essential Repair and Maintenance Services to Properties

2) Primary trade of contract(s)

Responsive Repairs

3) Place of performance

NUTS code: UKI| Greater London

Main site or place of performance:

Harrow

4) Short Description

United Living Group, the provider of infrastructure, affordable housing, property services, and telecoms, is pleased to announce that its subsidiary, United Living Property Services (ULPS), has won a GBP 40 million contract with the London Borough of Harrow for property repairs and maintenance.

The 8-year contract, which commenced on 1 July 2024, will cover approximately 5,000 properties across the Borough. ULPS will be carrying out day-to-day responsive repairs, void repairs, and planned maintenance.

Through London Borough of Harrow's Online

Contract Analysis: Harrow London Borough

TOTAL STOCK

4,793

This organisation only

TURNOVER

£32M

R&M EXPENDITURE

£9M

REPAIRS

62.6%

SERVICE

59.3%

Current Contracts: Responsive Repairs

CA

Provide Essential Repair and Maintenance Services to Properties

Winner(s): United Living Property Services

Tenure	Start	End	Ext.	Value	Location
48 months	01-07-2024	30-06-2032	2+2	£20,000,000	Harrow

United Living Group, the provider of infrastructure, affordable housing, property services, and telecoms, is pleased to announce that its subsidiary, United Living Property Services (ULPS), has won a GBP 40 million contract with the London Borough of Harrow for property repairs and maintenance.

The 8-year contract, which commenced on 1 July 2024, will cover approximately 5,000 properties across the Borough. ULPS...

View more

Expired Contracts: Responsive Repairs

CA

Housing Repairs and Maintenance 2016 - 2024

Winner(s): Wates Living Space

Tenure	Start	End	Ext.	Value	Location
96 months	01-07-2016	30-06-2024	-	£26,818,100	Harrow

Housing Repairs and Maintenance 2016-2024

CA

Harrow Housing Responsive Repairs + Maintenance.

Winner(s): Wates Living Space

Tenure	Start	End	Ext.	Value	Location
60 months	01-07-2016	30-06-2024	5	£25,000,000	West Harrow

Responsive Repairs & Maintenance of the housing stock managed by Harrow Council.The scope of work within this contract is housing day to day responsive repairs, void repairs and planned maintenance and will include the following:- Reactive maintenance including emergency, urgent and non-urgent or routine repairs to homes; communal areas; garages; paths and estate roads; fencing and other external elements on...

View more

Page 1 of

helpdesk@locarla.com

helpdesk@locarla.com

Every organisation has pages of relevant data.

Build-a-Table

Select Options

Selected Options

Company Type

Location: By Address

Location: By Stock

Housing Stock

Company Structure

Location: By Address

England

North West

Company Type

Housing Association

Company Structure

Parent

Profile

Housing

Energy Performance

Finance

People

Map

Library

Contract Research

Statistics

Download DataSheet

Torus

The 1 O...

Live Mer...

L1 6

Web

http

Torus

and

a new

furl

As a landlord, Torus , with around 40...

View more

Phone

0800 678 1894

Email

info@torus.co.uk

Facebook

https://www.facebook.com/WeAreTorus

Twitter

https://x.com/WeAreTorus

LinkedIn

https://www.linkedin.com/company/torus/

No of Employees

1,491

Total Board Members

Profile

HOUSING STOCK TYPE

LOCATION

INCOME

EXPENDITURE

HOUSING STOCK BY REGION

LATEST NEWS

General Needs

Affordable Rent

Supported Housing

Care Homes

Older People

Shared Ownership

Net Rental Income

Grants

Sale of Housing

Interest Received and Other Income

Management

Routine R&M

Rent Loss / Debts

Service Charge

Planned Maintenance

Depreciation

Interest Payable

TOTAL STOCK

37,864

This organisation only

GROUP STOCK

37,864

Combined stock

SERVICE

74.2%

REPAIRS

76.8%

EMPLOYEES

1,491

OPERATING COST PER HOME

£4,664

TURNOVER

£246M

OPERATING SURPLUS

£30M

WAGES

£54M

R&M EXPENDITURE

£37M

NEW BUILDS

875

REPORTS

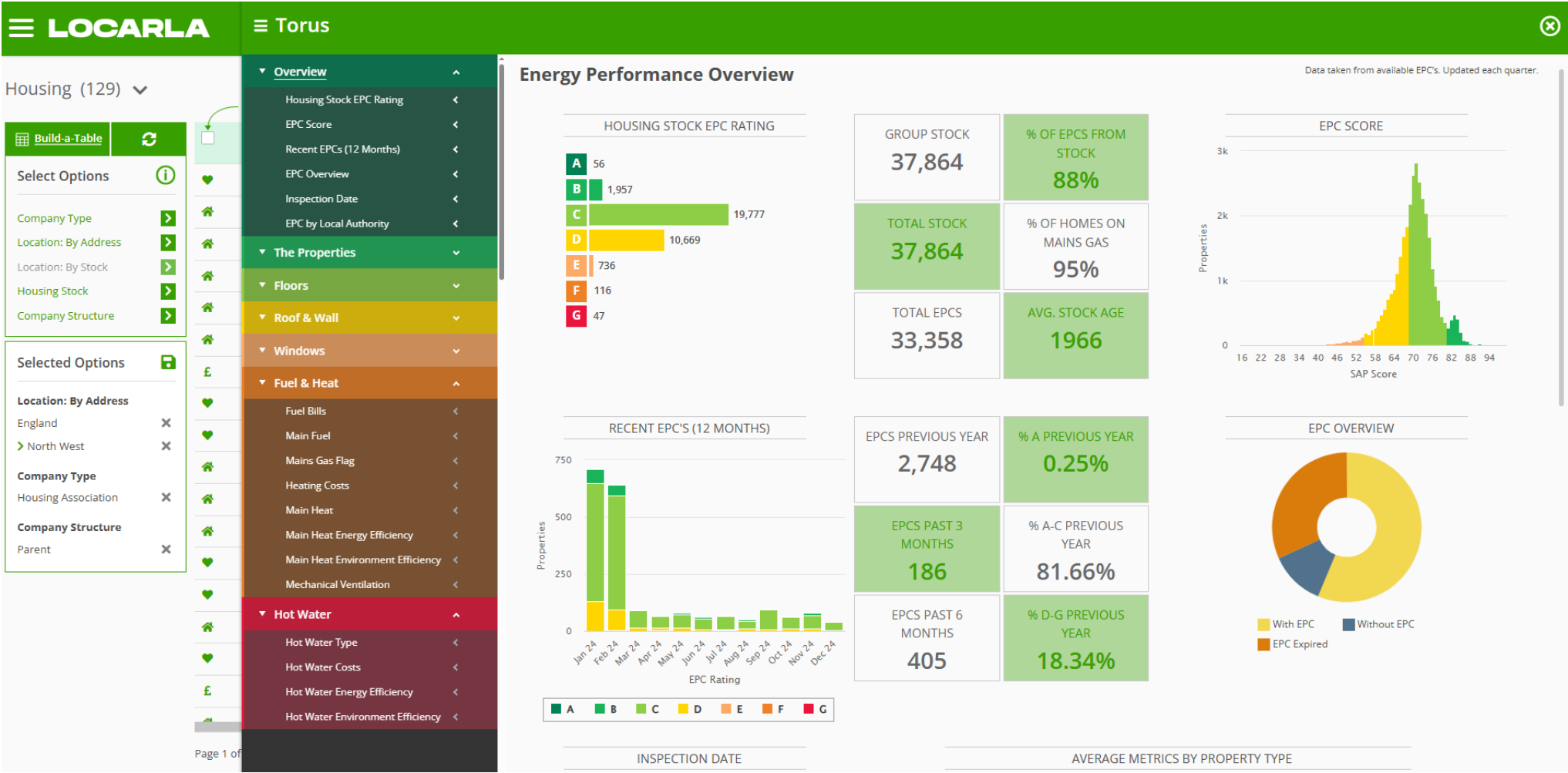
DB Remediation appointed for £6m Merseyside remediation

06/05/2025

PDF: Torus Developments - Assessment of the Affordability of Housing in Liverpool - September

10/09/2024

Including EPC analysis in ‘Locarla Properties’.



Our ‘People’ data is second to none.

LOCARLA

26

8

Search...

Export

People (338)

Select Options

Company Type

Job Title

Location

Housing Stock

Selected Options

Job Title

Asset Management

Company Type

Housing Association

Job Title

☐ Business Executives

☐ Finance and Procurement

☒ Property Fabric and Development

☐ Customer Services

Responsibilities

☒ Asset Management

☐ Commercial Services

☐ Compliance

☐ Environment

☐ Fire Safety

☐ Gas Services

☐ New Business

☐ Planning

☐ Regeneration & Development

☐ Repairs & Maintenance

☐ Senior Surveyor

☐ Sustainability

PANY	WEB	RESPONSIBILITIES	DEPARTMENT	EMAIL / FORMAT
in Community Housing...	...ccha.org.uk/	Repairs & Maintenance, Asset Man...	Repairs & Maintenance	
arian Ltd	...taltarian.co.uk/	Asset Management	Repairs & Maintenance	
ington Housing Associa...	...newingtonha.co.uk/	Asset Management	Repairs & Maintenance	
MOS Community Homes	...watmos.org.uk	Asset Management, Regeneration...	Construction & Planning	
n Housing Society Ltd...	...albynhousing.org.uk	Asset Management, Compliance	Repairs & Maintenance	
r Group	...aster.co.uk/	Asset Management	Repairs & Maintenance	
ull Community Housin...	...solihullcommunityhou...	Asset Management, Regeneration...	Construction & Planning	
Group Ltd.	...acisgroup.co.uk/	Asset Management, Regeneration...	Construction & Planning	
nhill Housing Associa...	...govanhillha.org/	Asset Management	Repairs & Maintenance	
h Liverpool Homes	...southliverpoolhomes....	Neighbourhood Services, Asset ...	Repairs & Maintenance	
Shropshire Towns and Rura...	...starhousing.org.uk/	Asset Management	Repairs & Maintenance	
THCH: Powered by Hyde	...thch.org.uk/	Repairs & Maintenance, Sustain...	Repairs & Maintenance	
Magenta Living	...magentaliving.org.uk...	Asset Management	Repairs & Maintenance	
First Choice Homes Oldham...	...fcho.co.uk/	Asset Management	Repairs & Maintenance	
Karbon Homes	...karbonhomes.co.uk/	Regeneration & Development, As...	Construction & Planning	
Futures Housing Group	...futureshg.co.uk/	Regeneration & Development, Su...	Construction & Planning	
Berneslai Homes	...berneslaihomes.co.uk	Compliance, Asset Management, ...	Repairs & Maintenance	
Tuntum Housing Associatio...	...tuntum.co.uk/	Regeneration & Development, As...	Construction & Planning	

Page 1 of 7 (338 results)

1

2

3

4

5

6

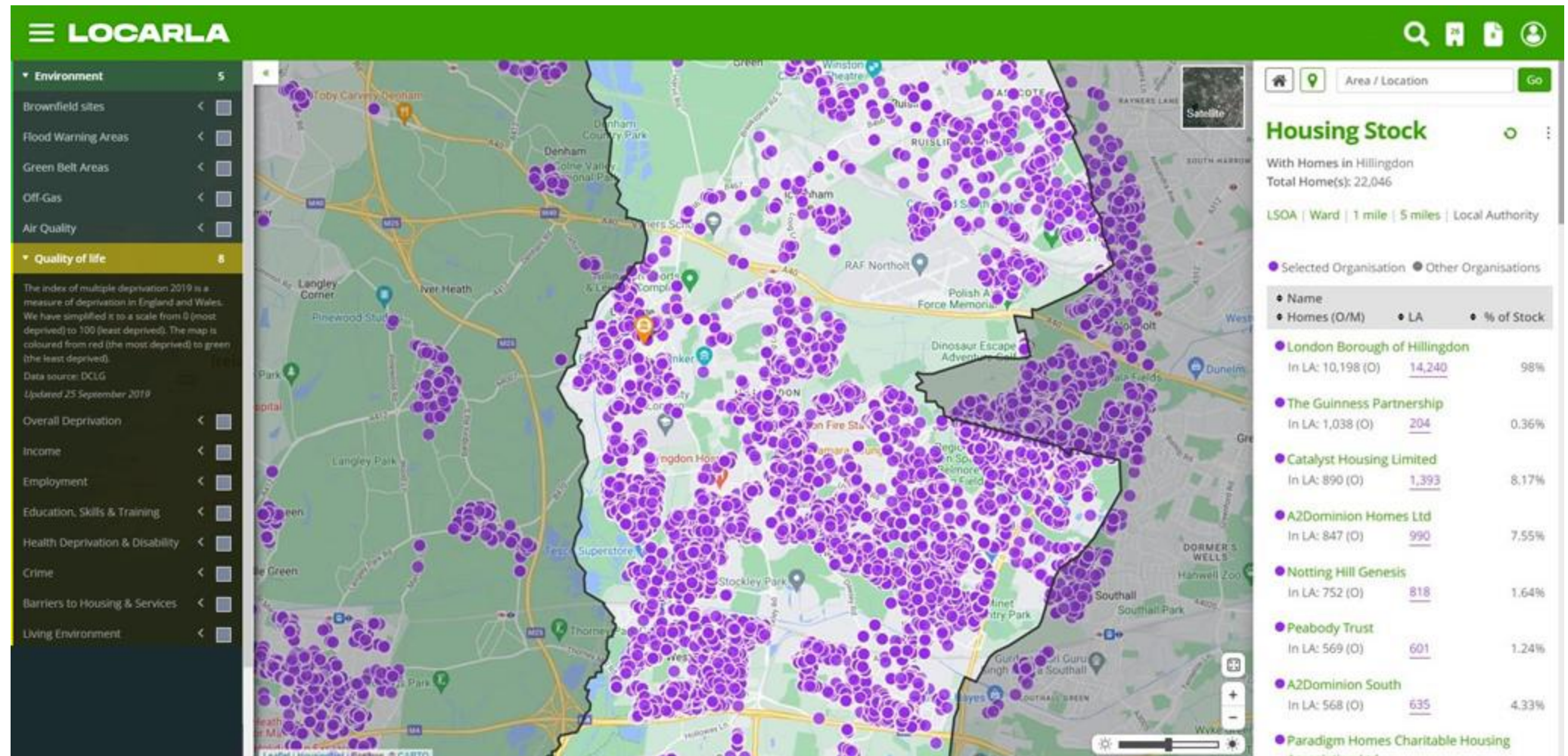
7

50

75

100

We map housing stock ...



[helpdesk@locarla.com](mailto:helpdesk@locarla.com)

Locarla League tables are published every month for – Top Contractors, Top Clients, Responsive Repair, Planned Works, Roofing, Gas & Central Heating, Voids, Fire Safety and Construction.

LOCARLA

League Tables – April '24 to March '25 (156)

Select Options

Trades

☐ Top 50 Contractors

☐ Responsive Repair

☒ Planned Works

☐ Gas Servicing & Central Heating

☐ Voids

☐ Fire Safety

☐ Roofing

Selected Options

Trades

Planned Works

RANK	CHANGE	CONTRACTOR	TRADE	CONTRACTS	ANNUAL £	TOTAL £	WIN
1	-	Axis Europe	Planned Works	4	£23.97M	£385.7M	-
2	-	United Living	Planned Works	5	£45.44M	£333.3M	-
3	+2	RE:GEN Group	Planned Works	4	£27.94M	£135.81M	1
4	-1	Wates Group	Planned Works	3	£11.93M	£112.52M	-
5	-1	Mulalley	Planned Works	3	£11.93M	£97M	-
6	+51	Esh Construction	Planned Works	4	£7.91M	£72.11M	1
7	-1	Greyline Builders	Planned Works	2	£7.86M	£61.86M	-
8	-1	Cardo (Wales & West)	Planned Works	1	£3M	£60M	-
9	-1	Sidey Solutions	Planned Works	13	£17.66M	£57.98M	-
10	-1	Trident Maintenance Services	Planned Works	1	£11M	£55M	-
11	-1	EQUANS	Planned Works	3	£10.59M	£46.78M	-
12	-1	Mears Group	Planned Works	1	£4.56M	£45.56M	-
13	-1	Lovell Partnerships	Planned Works	1	£12.97M	£40M	-
14	-1	PFL Electrical	Planned Works	2	£8.09M	£38.09M	-
15	New	PHS Home Solutions	Planned Works	1	£3.4M	£34M	1
16	-2	Warsett	Planned Works	1	£4.22M	£28.5M	-
17	-2	Gracelands Complete Maintenance Services	Planned Works	1	£5.5M	£27.5M	-
18	-1	Quinn London	Planned Works	2	£2.5M	£25M	-

Page 1 of 4 (156 results)

1

2

3

4

United Living

Contracts

Planned Internal and External Refurbishment Works Programme

Peabody Trust

Value : £170,000,000

Contract Start Date : 03-6-2024

Award Published Month : Dec-2024

Term in months : 58

Renewals in years : 5

North West Major Works Investment Programme

L&Q Group

Value : £205,000,000

Contract Start Date : 01-6-2024

Award Published Month : Jul-2024

Term in months : 166

Major Works Programme for Ray Lodge Estate

Redbridge London Borough

Value : £5,000,000

Contract Start Date : 25-6-2024

Award Published Month : Jun-2024

Kitchen Bathroom Upgrade Work

Kensington and Chelsea London Borough

Value : £23,300,000

helpdesk@locarla.com

[www.locala.com](http://www.locala.com)

About Us: <https://www.locala.com/aboutus/>

Our Licences & Pricing: <https://www.locala.com/pricing>

Locala.com is intuitive, easy to use and all our data can be exported for analysis in any Large Language Model, such as ChatGPT or Gemini. To set up a 30 minute demo, get in touch with us at [helpdesk@locala.com](mailto:helpdesk@locala.com)

<div><div><div>Social Housing</div><div><div>PDF</div></div></div><div><div>£1,450</div><div>per year</div></div><div><div>A one-stop-shop of UK Social Housing information; for business development, marketing &amp; research.</div></div></div>	<div><div><div>RMI Insight</div><div><div>PDF</div></div></div><div><div>£3,995</div><div>per year</div></div><div><div>If you work in Repairs, Maintenance or Construction in the Public Sector and want to win more business, this licence for you.</div></div></div>	<div><div><div>Decarbonisation &amp; Retrofit</div><div><div>PDF</div></div></div><div><div>£5,995</div><div>per year</div></div><div><div>Are you retrofit ready? We hold the most comprehensive database of Social Homes, EPC, and analysis of housing organisations.</div></div></div>
<div><div><div>Social Housing features</div><div><div>i</div></div></div><div><div>Data &amp; Information on 3000 Housing Associations, Local Authorities &amp; their affiliated companies.</div><div>Including:</div><div><div>Profile &amp; Location</div><div>Housing</div><div>Finance</div><div>Governance</div><div>Tenant Satisfaction Measures (TSM)</div><div>Housing Stock Mapping</div><div>Statistics &amp; Peer Benchmarking</div><div>People: Address Book</div><div>Library: News &amp; Reports</div><div>Export Data</div><div>Download PDF Profiles</div><div>Daily News</div><div>On &amp; Offline Support</div></div><div><div>Additional Users £95 per year</div><div>All prices ex. VAT</div></div></div></div>	<div><div><div>All Social Housing features +</div><div><div>i</div></div></div><div><div>Tenders &amp; Leads</div><div>Daily Tender Alerts</div><div>Contracts Awarded</div><div>Pipeline Analysis</div><div>Premium Stock Mapping</div><div>Competitor Analysis</div><div>Contract Registers</div><div>R&amp;M &amp; Construction League Tables</div><div>Local Authority Minutes</div><div>Export Contract Data</div></div><div><div>Additional Users @ £240 per year</div><div>All prices ex. VAT</div></div></div>	<div><div><div>All RMI Insight features +</div><div><div>i</div></div></div><div><div>4.7M Social Housing Title Database</div><div>All homes scrubbed against the EPC Register every 3 months</div><div>EPC Filtering &amp; Mapping</div><div>Property Details page for every home.</div><div>EPC Analysis for every Social Landlord</div></div><div><div>Additional Users @ £240 per year</div><div>All prices ex. VAT</div></div></div>

[helpdesk@locala.com](mailto:helpdesk@locala.com)